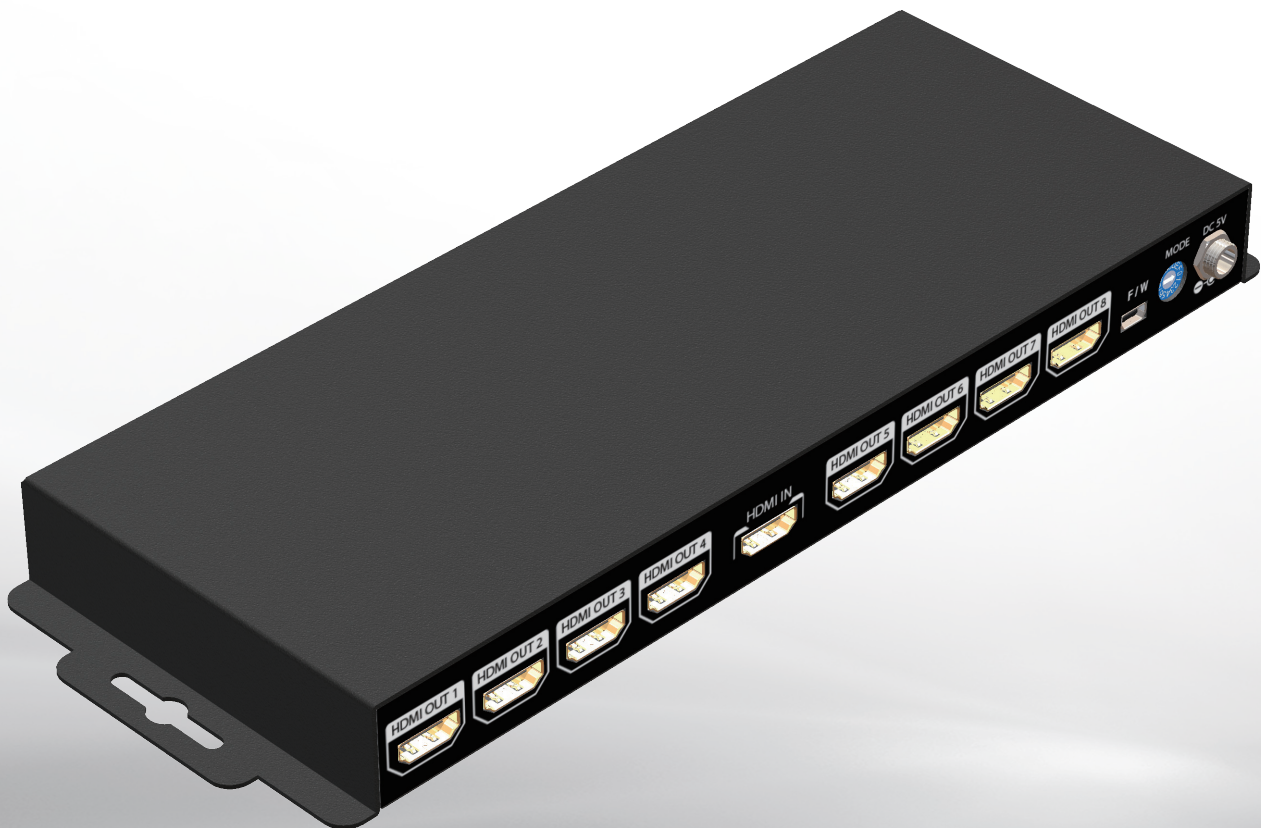


SALSON®

User Manual

HDM-SPL-2448H

**1x8 HDMI 2.0a Splitter with
Built-in & User Adjustable EDID
Management**



HDCP
2.2

HDMI
2.0

4K@60Hz
UltraHD



CE

FC

RoHS
Compliance

7.1 CH
AUDIO

rev: 170725
Made in Taiwan



Safety and Notice

The **HDM-SPL-2448H 1x8 HDMI 2.0a Splitter with Built-in & User Adjustable EDID Management** has been tested for conformance to safety regulations and requirements, and has been certified for international use. However, like all electronic equipments, the **HDM-SPL-2448H** should be used with care. Please read and follow the safety instructions to protect yourself from possible injury and to minimize the risk of damage to the unit.

- Follow all instructions and warnings marked on this unit.
- Do not attempt to service this unit yourself, except where explained in this manual.
- Provide proper ventilation and air circulation and do not use near water.
- Keep objects that might damage the device and assure that the placement of this unit is on a stable surface.
- Use only the power adapter and power cords and connection cables designed for this unit.
- Do not use liquid or aerosol cleaners to clean this unit. Always unplug the power to the device before cleaning.

TABLE OF CONTENTS

● INTRODUCTION	1
● FEATURES	1
● PACKAGE CONTENTS	1
● SPECIFICATIONS	2
● PANEL DESCRIPTIONS	3
● CONNECTION DIAGRAM	4
● HARDWARE INSTALLATION	4
● NOTICE	5
● LIMITED WARRANTY	6

INTRODUCTION

The **HDM-SPL-2448H 1x8 HDMI 2.0a Splitter with Built-in & User Adjustable EDID Management** provides the most cost effective and advanced HDMI splitter solution on the market, by which the high definition video and high quality audio can be transmitted to 4 different locations without losing quality. HDM-SPL-2448H supports all 3D formats and the true 4K2K video!

With built-in USB firmware update mechanism, the compatibility among countless HDMI sources and receivers can be further guaranteed. With the upmost HDR/4K2K@60 4:4:4 8bits and high definition audio support, HDM-SPL-2448H is suitable for high quality HDMI broadcasting, digital signage and education applications!

FEATURES

- HDMI 2.0a compliant
- Supports 4K2K@60 4:4:4 8bits
- Supports High Dynamic Range (HDR)
- HDCP 2.2 and 1.4 compliant
- Wide frequency range: 25MHz~600MHz
- Video bandwidth: 18Gbps
- Supports default EDID and EDID learning from display
- Supports xvYCC, x.v.Color & Deep Color
- Mini-USB firmware update for expanding compatibility
- Supports Dolby Digital, DTS-HD and Dolby TrueHD audio
- Allows cascading
- Easy installation

PACKAGE CONTENTS

- 1x HDM-SPL-2448H
- 1x DC 5V 4A power supply
- 1x User manual

SPECIFICATIONS

Model Name		HDM-SPL-2448H
Technical		
Role of usage		1x8 Distribution Amplifier (Splitter)
HDMI compliance		HDMI 2.0a
DVI compliance		DVI 1.0
HDCP compliance		HDCP 2.2
Video bandwidth		Single-link 600MHz [18Gbps]
Video support		HDR 4K2K@60 (4:2:0 10bits) / 4K2K@60 (4:4:4 8bits)
Audio support		DTS-HD Master Audio, Dolby TrueHD Dolby Digital, DTS, DVD-Audio, LPCM, SACD, MPCM
ESD protection		Human body model — $\pm 15\text{kV}$ [air-gap discharge] & $\pm 8\text{kV}$ [contact discharge]
PCB stack-up		4-layer board [impedance control — differential 100 Ω ; single 50 Ω]
Firmware update		Feasible via Mini-USB port
Input		1x HDMI
Output		8x HDMI
HDMI connector		Type A [19-pin female]
Rotary control switch		EDID Mode selection
Mechanical		
Housing		Metal enclosure
Dimensions [L x W x H]	Model	243 x 98 x 25mm [9.5" x 3.9" x 1"]
	Package	371 x 170 x 77mm [1'2" x 6.7" x 3"]
	Carton	410 x 368 x 393mm [1'3" x 1'2" x 1'3"]
Weight	Model	880g [31 oz]
	Package	1.58kg [3.5 lbs]
Fixedness		Wall-mounting case
Power supply		5V 4A DC
Power consumption		11 Watts [max]
Operation temperature		0~40°C [32~104°F]
Storage temperature		-20~60°C [-4~140°F]
Relative humidity		20~90% RH [no condensation]

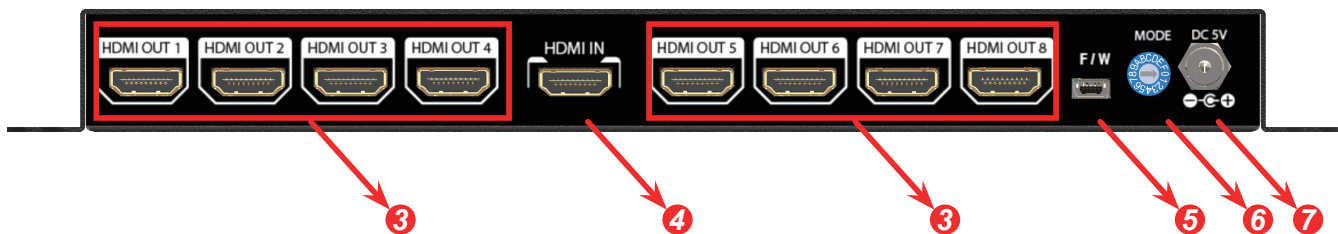
PANEL DESCRIPTIONS

Front Panel



- 1 Signal LED:** Signal LED indicator
- 2 Power LED:** Lights on when device is ready

Rear Panel

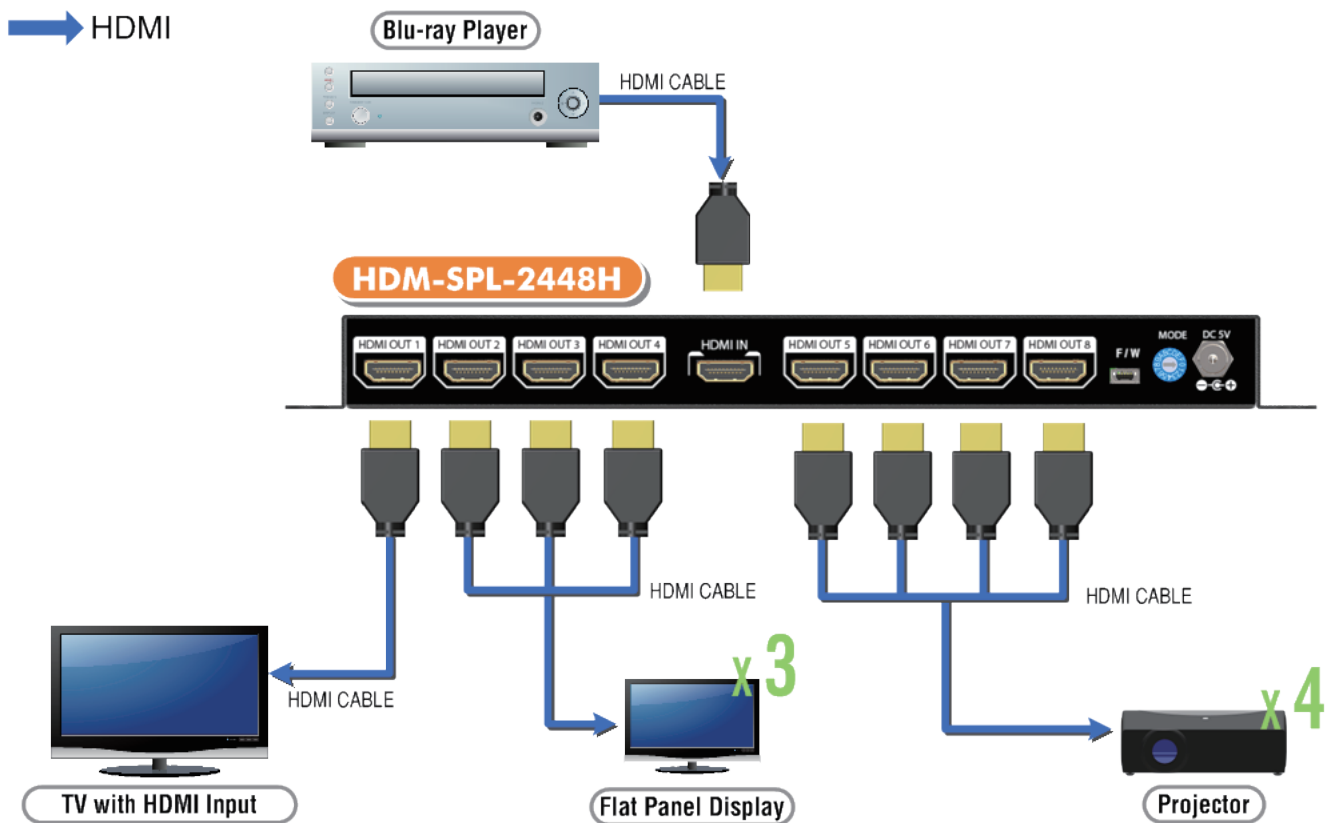


- 3 HDMI OUT1-8:** HDMI outputs to HDMI displays
- 4 HDMI IN:** Connect to a HDMI input source
- 5 Mini-USB:** For technical support only [firmware update]
- 6 MODE:**
 - 0 - F/W update mode
 - 1 - EDID Ultra-HD(4K2K@60) - 24bit 2D video & 7.1ch audio
 - 2 - EDID Ultra-HD(4K2K@60) - 24bit 2D video & 2ch audio
 - 3 - EDID Ultra-HD(4K2K@30) - 24bit 2D video & 7.1ch audio
 - 4 - EDID Ultra-HD(4K2K@30) - 24bit 2D video & 2ch audio
 - 5 - EDID Full-HD(1080p@60) - 24bit 2D video & 7.1ch audio
 - 6 - EDID Full-HD(1080p@60) - 24bit 2D video & 2ch audio
 - 7 - EDID Full-HD(1080p@60) - 24bit 3D video & 7.1ch audio
 - 8 - EDID Full-HD(1080p@60) - 24bit 3D video & 2ch audio
 - 9 - EDID Full-HD(1080p@60) - 36bit 2D video & 7.1ch audio
 - A - EDID Full-HD(1080p@60) - 36bit 2D video & 2ch audio
 - B - EDID HD(1080p@30)(1080i@60)(720p@60)-24bit 2D video & LPCM7.1ch/Dolby Digital
 - C - EDID HD(1080p@30)(1080i@60)(720p@60) - 24bit 2D video & 2ch audio
 - D - Auto EDID analysis learning mode
 - E - Learn EDID from output1
 - F - Learn EDID from output2
- 7 +5V DC:** Connect to the +5V DC 4A power supply unit



Automatic EDID learning will detect all the connected HDMI equipped monitors and analyze all the content of EDID. The EDID with minimal resolution support will be the reference EDID for incoming HDMI source players.

CONNECTION DIAGRAM



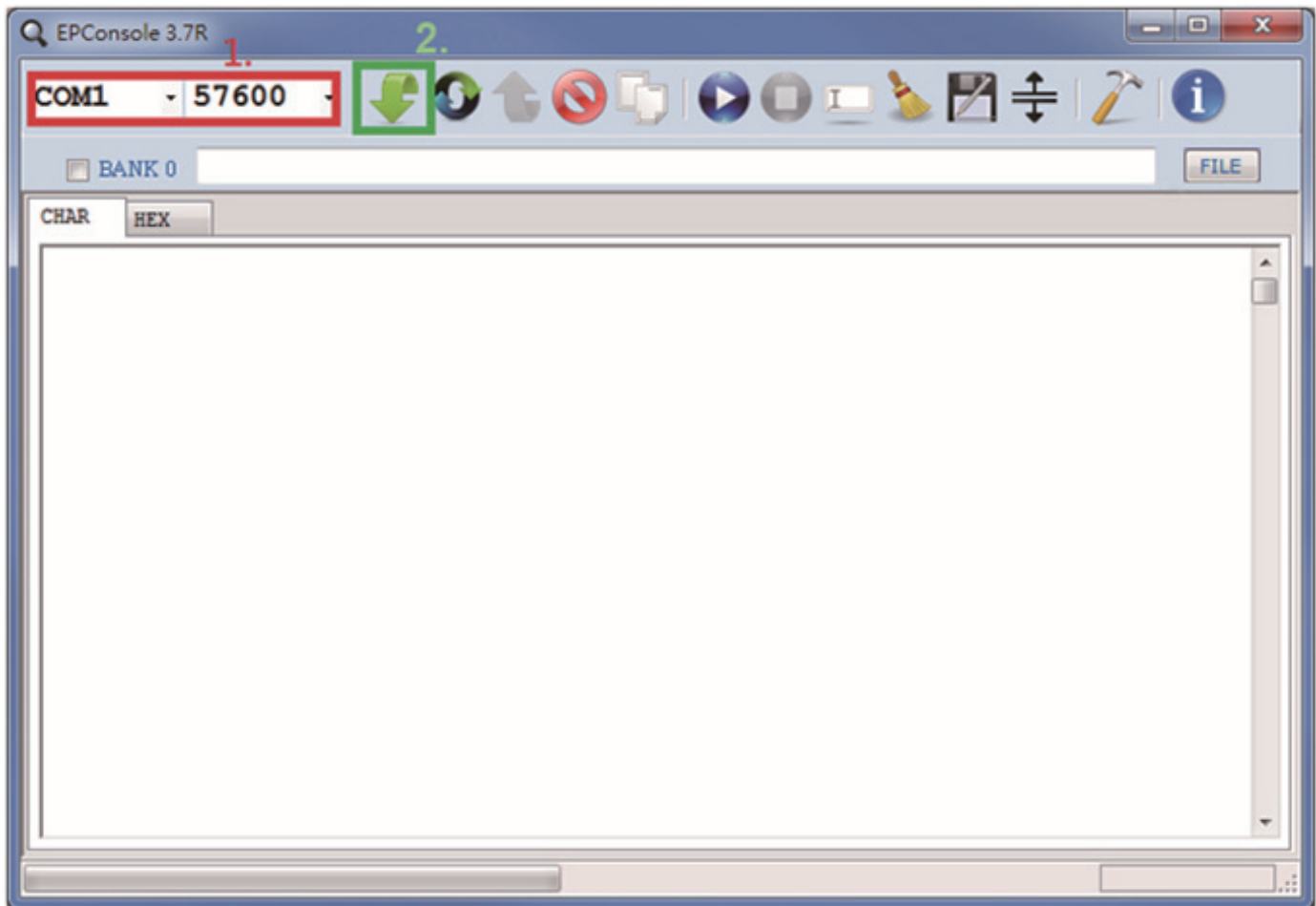
HARDWARE INSTALLATION

Broadcasts HDMI signal to 8 HDMI displays!

1. Switch off all devices, including monitors.
2. Connect to the displays.
3. Connect an HDMI source (such as a Blu-ray Disc player) to the HDMI In.
4. Make sure the rotary switch is NOT at "MODE 0"
5. Plug in 5V DC power supply.
6. Power on the HDMI monitors.
7. Power on the HDMI source.

NOTICE

1. While connecting a new monitor to the splitter under mode D (auto EDID) & mode E and F (EDID learning), experiencing a short period of time without displaying might be expected. The splitter will do Automatic EDID learning which analyzes the newly connected monitor to see if the EDID for the HDMI input is necessary to update!
2. For firmware update through Mini-USB, users MUST turn the power off, set the rotary switch to "0", and then connect the Mini-USB cable between PC and device. Open the firmware update software, [1] set the correct com port and baud rate (57600 is recommended), [2] click the "File" button to direct to the firmware HEX or BIN file, power on the device and press "Program MCU" symbol to firmware update. Once update process is done, please power off the device and set the rotary switch back to other mode (NOT to "0").



LIMITED WARRANTY

The SELLER warrants the **HDM-SPL-2448H 1x8 HDMI 2.0a Splitter with Built-in & User Adjustable EDID Management** free from defects in the material and workmanship for 1 year from the date of purchase from the SELLER or an authorized dealer. Should this product fail to be in good working order within 1 year warranty period, The SELLER, at its option, repair or replace the unit, provided that the unit has not been subjected to accident, disaster, abuse or any unauthorized modifications including static discharge and power surge. This warranty is offered by the SELLER for its BUYER with direct transaction only. This warranty is void if the warranty seal on the metal housing is broken.

Unit that fails under conditions other than those covered will be repaired at the current price of parts and labor in effect at the time of repair. Such repairs are warranted for 90 days from the day of reshipment to the BUYER. If the unit is delivered by mail, customers agree to insure the unit or assume the risk of loss or damage in transit. Under no circumstances will a unit be accepted without a return authorization number.

The warranty is in lieu of all other warranties expressed or implied, including without limitations, any other implied warranty or fitness or merchantability for any particular purpose, all of which are expressly disclaimed.

Proof of sale may be required in order to claim warranty. Customers outside Taiwan are responsible for shipping charges to and from the SELLER. Cables and power adapters are limited to a 30 day warranty and must be free from any markings, scratches, and neatly coiled.

The content of this manual has been carefully checked and is believed to be accurate. However, The SELLER assumes no responsibility for any inaccuracies that may be contained in this manual. The SELLER will NOT be liable for direct, indirect, incidental, special, or consequential damages resulting from any defect or omission in this manual, even if advised of the possibility of such damages. Also, the technical information contained herein regarding the HDM-SPL-2448H features and specifications is subject to change without further notice.

SATSON®